

KARL F. DEAN
MAYOR



METROPOLITAN GOVERNMENT OF NASHVILLE AND DAVIDSON COUNTY

October 29, 2012

DEPARTMENT OF WATER AND SEWERAGE SERVICES
1600 SECOND AVENUE, NORTH
NASHVILLE, TENNESSEE 37208-2206

Chief, Environmental Enforcement Section
Environmental and Natural Resources Division
U. S. Department of Justice
Post Office Box 7611
Washington, D. C. 20044-7611

United States Attorney
Middle District of Tennessee
110 Ninth Avenue, South, Suite A961
Nashville, TN 37203

Denisse D. Diaz, Chief
Clean Water Enforcement Branch
Water Protection Division
U. S. Environmental Protection Agency, Region 4
Atlanta Federal Center
61 Forsyth Street, S.W.
Atlanta, GA 30303

Mr. Barry Turner, Deputy Attorney General
Office of the Tennessee Attorney General
Environmental Division
P. O. Box 20207
Nashville, TN 37202

Mr. Patrick Parker, Assistant General Counsel
Tennessee Department of Environment and Conservation
6th Floor, L & C Annex
401 Church Street
Nashville, TN 37243

Re: DOJ Case No. 90-5-1-1-09000
Submittal of Quarterly Progress Report

Gentlemen and Madam:

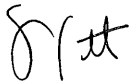
In accordance with the provisions of the Consent Decree, Section XIX (Reporting Requirements), Subsection A, herewith we are transmitting the Quarterly Progress report which covers the time period from July 1, 2012 through September 30, 2012.

A copy of this report is concurrently being placed in the Public Document Repository (PDR).

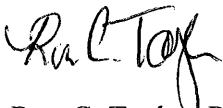
I certify under penalty of law that this document and all attachments were prepared under my direction or supervision in accordance with a system designed to assure that qualified personnel properly gather and evaluate the information submitted. Based on my inquiry of the person or persons who manage the system, or those persons directly responsible for gathering such information, the information submitted is, to the best of my knowledge and belief, true, accurate, and complete. I am aware that there are significant penalties for submitting false information, including the possibility of fine and imprisonment for knowing violations.

If you have any questions concerning this report please contact me.

Sincerely,



Scott A. Potter, P.E.
Director



Ron C. Taylor, P.E.
Overflow Abatement Program Director
Engineering Division

Cc: Mr. David Tucker, Assistant Director, Operations
Mr. Cyrus Q. Toosi, P.E., Assistant Director / Chief Engineer, Engineering
Mr. Gregory A. Ballard, P.E., Engineer 3
Mr. Thomas G. Cross, Associate Director, Metropolitan Department of Law

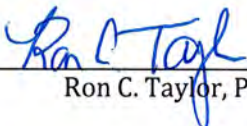
Clean Water Nashville Overflow Abatement Program

Metropolitan Government of Nashville and Davidson County
Department of Water and Sewerage Services

CONSENT DECREE QUARTERLY PROGRESS REPORT

July 1, 2012 through September 30, 2012

I certify under penalty of law that this document and all attachments were prepared under my direction or supervision in accordance with a system designed to assure that qualified personnel properly gather and evaluate the information submitted. Based on my inquiry of the person or persons who manage the system or those persons directly responsible for gathering such information, the information submitted is, to the best of my knowledge and belief, true, accurate and complete. I am aware that there are significant penalties for submitting false information, including the possibility of fine and imprisonment for knowing violations.



Ron C. Taylor, P.E., Program Director

10/29/12

Date

Table of Contents

Section 1	Introduction	1-1
1.1	Additional Programs	1-1
1.2	Report Organization	1-2
Section 2	<i>Corrective Action Plan/Engineering Report</i>.....	2-1
2.1	Completed CAP/ER Projects.....	2-1
2.2	CAP/ER Projects under Construction.....	2-1
2.3	CAP/ER Projects under Design.....	2-2
2.4	Upcoming CAP/ER Projects	2-3
Section 3	<i>Long Term Control Plan</i>.....	3-1
3.1	Completed LTCP Projects.....	3-1
3.2	LTCP Projects under Construction.....	3-2
3.3	LTCP Projects under Design	3-2
3.4	Upcoming LTCP Projects	3-2
Section 4	Additional Measures to Maintain Consent Decree Compliance	4-1
4.1	Munn Road Pumping Station.....	4-1
4.2	2011 Collection System Structural Defect Repair Project.....	4-1
Section 5	Quarterly SSO and Dry Weather CSO Report.....	5-1

List of Tables

Table 5-1 Quarterly SSO Report	5-2
--------------------------------------	-----

Appendix

Appendix A	Schedule for Current and Upcoming Projects
------------	--

Section 1

Introduction

On March 12, 2009, the Metropolitan Government of Nashville and Davidson County, Tennessee (Metro), entered into a Consent Decree with the United States and the State of Tennessee. To fulfill the reporting requirements defined in Section XIX.A. of the Consent Decree, Metro has prepared this *Quarterly Progress Report*, which includes the following information:

1. Information on sanitary sewer overflows (SSOs) and dry-weather combined sewer system overflows (CSOs) occurring during the reporting period
2. A description of the work conducted during the reporting period to comply with the requirements of the Consent Decree
3. The anticipated work for the upcoming quarter to comply with the requirements of the Consent Decree
4. Any additional information necessary to demonstrate that Metro is adequately implementing the work

Work, as defined in the Consent Decree, includes all activities that Metro is required to perform under the Consent Decree. For the purposes of this *Quarterly Progress Report*, however, the focus will remain on current and upcoming work related to the *Corrective Action Plan/Engineering Report (CAP/ER)*, the *Long Term Control Plan (LTCP)*, and additional activities to address SSOs and CSOs.

1.1 Additional Programs

Several additional programs, listed below, were also required to be developed or implemented as part of the Consent Decree. Any modifications or updates to these programs will be identified in Section 4 of this report.

- *Spill and Overflow Response Plan (Section VII.C.2)* – Metro continues to operate under the current *Spill and Overflow Response Plan (SORP)*. A review of the SORP will be conducted annually with any proposed changes submitted for EPA review and approval by June 1 each year.
- *Inter-jurisdictional Agreement Program (Section VII.C.3)* – All required inter-jurisdictional agreements are now in place, and Metro will continue to operate under these agreements, including monitoring peak flows received.
- *Capacity Assurance Plan (Section VII.C.4)* – The *Capacity Assurance Plan* will continue to be applied as a tracking/approval tool for new development/flow in the sanitary sewer system (SSS).
- *Pump Station Operation Plan for Power Outages (Section VII.C.5)* – All projects identified in the *Pump Station Operation Plan for Power Outages* were completed prior to the start of the reporting period excluding projects at the Holiday Travel Park Pumping Station and the Munn

Road Pumping Station. Additional information on the status of these two remaining improvements is discussed in Section 2 and Section 4, respectively.

- *Nine Minimum Controls Compliance Plan* (Section VII.D.1) – All elements of the *Nine Minimum Controls Compliance Plan* (NMC) were completed in 2012.
- Supplemental Environmental Projects (Section VIII) – The Supplemental Environmental Projects (SEPs) required in the Consent Decree were completed in 2010.

1.2 Report Organization

This *Quarterly Progress Report* is organized as follows:

Section 1 – Introduction

Section 2 – *Corrective Action Plan/Engineering Report*

Section 3 – *Long Term Control Plan*

Section 4 – Additional Measures to Maintain Consent Decree Compliance

Section 5 – Quarterly SSO and Dry-Weather CSO Report

Section 2

Corrective Action Plan/Engineering Report

To address the conditions causing overflows in their sanitary sewer system, Metro developed a *Corrective Action Plan / Engineering Report (CAP/ER)* that was submitted to EPA and TDEC on September 11, 2011.

The CAP/ER development began with a characterization of Metro's sanitary sewer system through extensive monitoring and modeling to understand the existing system's limitations. The need for improvements to address both current and future sewer capacity needs was then assessed, and potential alternatives were evaluated to select efficient and cost effective solutions. These recommended projects, which include infrastructure rehabilitation, additional conveyance capacity, and storage of wet weather flows, are presented in the CAP/ER.

While EPA and TDEC review the report, Metro continues to move forward with the implementation of several projects presented in the CAP/ER. These projects are described in the following subsections, and a schedule illustrating current and upcoming work on CAP/ER projects is presented as Appendix A.

2.1 Completed CAP/ER Projects

The following projects, discussed in the CAP/ER, were completed prior to the start of the 3rd Quarter of 2012:

- Dry Creek Wastewater Treatment Plant Optimization
- Smith Springs Equalization Storage
- Barker Road / Omohundro Equalization Storage Phase I
- West Park Equalization Storage Phase I
- Mill Creek 36-inch Trunk Sewer System Rehabilitation
- Rockwood Conveyance Improvements

2.2 CAP/ER Projects under Construction

The following projects, discussed in the CAP/ER, were under construction during the reporting period:

- Holiday Travel Park Gravity Conversion

The gravity sewer line that was constructed to eliminate the Holiday Travel Park pumping station SSO became operational on July 12, 2012. The main pumping station was taken out of service in August 2012, eliminating the need for the back-up power generator to avoid power failure related overflows.

- Whites Creek Wastewater Treatment Plant (WWTP) Optimization and Disinfection Project

Construction of the improvements to the Whites Creek WWTP to optimize treatment of wet weather flows and increase disinfection capacity began in November 2011. Construction continued throughout the 3rd Quarter of 2012 and is expected to continue throughout the upcoming quarter.

- Whites Creek Wastewater Pumping Station

Construction of the improvements to the Whites Creek Wastewater Pumping Station and its associated force main began in February 2012. Construction continued throughout the 3rd Quarter of 2012 and is expected to continue throughout the upcoming quarter.

- Dodson Chapel Equalization Tank and Wastewater Pumping Station Expansion

Construction of the Dodson Chapel Equalization Tank and Wastewater Pumping Station Expansion began during the 2nd Quarter of 2012 and has continued throughout the reporting period.

2.3 CAP/ER Projects under Design

The following projects, discussed in the CAP/ER, are under design during the reporting period:

- Lakewood Water and Sewer Replacement

Design of sewer improvements in the Lakewood area is complete; however, the scope of this project was revised to also include improvements to the water and stormwater systems. Incorporation of the design of those elements is nearing completion, and easements and right-of-entry permits are currently being obtained for the project area. Construction is anticipated to begin in early 2013. This project represents the first of two phases of work in the Lakewood area.

- West Park Equalization Facility Phases II and III

In order to minimize impacts to the surrounding neighborhood, Phases II and III of the West Park Equalization Facility were combined into a single design and construction project. Design of this project began in May 2012; however, during preliminary design it was determined that potential flood impacts to adjacent properties may require an alternate site for the equalization tank. Additional sites are currently being evaluated. When constructed, the additional improvements at the West Park Equalization Facility are expected to add 21 million gallons of storage and expanded pumping capacity.

- Mill Creek / Opryland Equalization Facility Phase II

Phase II of the Mill Creek / Opryland Equalization Facility includes the construction of a 15 million gallon storage facility. Design of this project began on August 10, 2012, and is anticipated that this design work will continue throughout the upcoming quarter.

- Shelby Park Rehabilitation – Area 1 – Virginia Avenue

This rehabilitation project is the first of multiple projects that will be conducted in the Shelby Park Rehabilitation project area. The area to be evaluated for rehabilitation includes approximately 54,400 linear feet of gravity sewer and 280 manholes. Design for this project began on September 11, 2012, and will continue throughout the upcoming quarter.

- Neely's Bend Rehabilitation

Based on the condition assessment data collected in the area adjacent to the defined project area, the area targeted for rehabilitation has been extended to include all gravity sewer that directly drains to the Neely's Bend Pump Station. The project area to be evaluated for rehabilitation now includes approximately 31,400 linear feet of gravity sewer and 150 manholes. Design of these sewer rehabilitation improvements in the Neely's Bend project area began on September 27, 2012, and will continue throughout the upcoming quarter.

2.4 Upcoming CAP/ER Projects

The following projects, discussed in the CAP/ER, are anticipated to begin design during the upcoming quarter:

- Dodson Chapel Pipe Improvements

Following the completion of the Rockwood Conveyance Improvements and subsequent updates to the hydraulic model in this area, evaluation of the collection system in the Dodson Chapel Pipe Improvements area indicated that the extents of the proposed project could be reduced while still addressing overflows. The current project consists of increasing the conveyance capacity of approximately 3,400 linear feet of sewer. In June 2012, Metro issued a request for proposals for the design of this project. The proposals submitted were evaluated and a designer selected during the previous quarter. Design is anticipated to begin in October 2012.

- Cowan / Riverside Rehabilitation – Area 1 – Jones Avenue

This rehabilitation project is the first of multiple projects that will be conducted in the Cowan / Riverside Rehabilitation project area. The area to be evaluated for rehabilitation includes approximately 50,300 linear feet of gravity sewer and 270 manholes. Design for this project is anticipated to begin in the upcoming quarter.

- Joelton Rehabilitation

The Joelton Rehabilitation project comprises the evaluation of approximately 38,700 linear feet of gravity sewer and 190 manholes for rehabilitation and repair. Design for this project is anticipated to begin in the upcoming quarter.

- Brick Church Pike Pipe Improvements

The Brick Church Pike Pipe Improvements project consists of increasing the conveyance capacity of the approximately 15,500 linear feet of gravity sewer. A request for proposals for the design of these improvements is anticipated to be issued during the upcoming quarter.

- Cowan / Riverside Rehabilitation – Area 2 – Dickerson Pike

This rehabilitation project is the second of multiple projects that will be conducted in the Cowan / Riverside Rehabilitation project area. The area to be evaluated for rehabilitation includes approximately 51,400 linear feet of gravity sewer and 290 manholes. Design for this project is anticipated to begin in the upcoming quarter.

- Shelby Park Rehabilitation – Area 2 – Norvel Avenue

This rehabilitation project is the second of multiple projects that will be conducted in the Shelby Park Rehabilitation project area. The area to be evaluated for rehabilitation includes approximately 56,300 linear feet of gravity sewer and 320 manholes. Design for this project is anticipated to begin in the upcoming quarter.

In addition to the projects listed above, Metro continues to conduct planning activities for multiple projects including acquiring necessary land to site facilities and collecting of sewer condition assessment data.

Section 3

Long Term Control Plan

To reduce the occurrence and impact of combined sewer overflows into the Cumberland River, Metro developed an update to the *Long Term Control Plan* (LTCP), which was submitted to EPA and TDEC on September 11, 2011.

The LTCP followed EPA's *Combined Sewer Overflow Control Policy* in implementing a rigorous process for identifying and evaluating alternatives to reduce combined sewer overflows. Consideration included financial and engineering analyses to develop recommended improvements in conjunction with four key objectives that were established early in the planning process:

- Improve the water quality of the Cumberland River by reducing impacts from combined sewer overflows.
- Provide a level of CSO control that results in improvements in water quality that are consistent with the community's use of the Cumberland River.
- Align investment in CSO controls to be commensurate with the contribution of CSOs to water quality relative to other sources.
- Consider the impact of the overall program cost on the ratepayers in the current economic climate.

These goals and objectives were developed based on feedback provided by representatives from MWS, local government, and the community through a public engagement campaign developed to solicit input from affected stakeholders.

As EPA and TDEC review the LTCP, Metro continues to move forward with the implementation of several projects presented in the LTCP. These projects are described in the following subsections, and a schedule illustrating current and upcoming work on LTCP projects is presented as Appendix A.

3.1 Completed LTCP Projects

Although no projects listed in the LTCP were completed during the current reporting period, the following projects, discussed in the LTCP, were completed prior to the start of the 3rd Quarter of 2012:

- Broadway Improvements
- Washington CSO Facility Improvements
- Van Buren Improvements

3.2 LTCP Projects under Construction

The following project, discussed in the LTCP, is under construction:

- Driftwood Equalization Basin Expansion

The design of the Driftwood Equalization Basin Expansion was completed during the 2nd Quarter of 2012. Construction of this project commenced on July 10, 2012 and will continue throughout the upcoming quarter.

3.3 LTCP Projects under Design

There are no LTCP projects currently under design.

3.4 Upcoming LTCP Projects

The following project, discussed in the LTCP, is anticipated to begin design during the upcoming quarter:

- Apex Sewer Corrections

The Apex Sewer Corrections project consists of the replacement or realignment of approximately 1,200 linear feet of gravity sewer in the Washington CSO basin. Design of this project is anticipated to begin during the upcoming quarter.

In addition to the project listed above, Metro continues to work on the Central Wastewater Treatment Plant Optimization Study, which will evaluate the feasibility of treating additional wet weather flows at the plant.

Section 4

Additional Measures to Maintain Consent Decree Compliance

In addition to the CAP/ER and LTCP projects described in the previous sections, the measures described in the following subsections are related to Metro's on-going Consent Decree compliance.

4.1 Munn Road Pumping Station

A temporary generator continues to be utilized at the Munn Road Pumping Station where, due to difficulties in obtaining property rights, Metro has been unable to complete the generator installation. In an attempt to reach an amicable solution with the impacted property owner, Metro set aside the court date for the Eminent Domain suit and has been negotiating with the property owner through his attorney during the past quarter. In the event that no amicable solution can be reached within the 4th Quarter of 2012, Metro will establish a new court date to seek judgment for the necessary property rights. Until this situation is resolved, the temporary generator located at this site will continue to receive priority attention for activation, as necessary, until the permanent improvements at this location have been completed.

4.2 2011 Collection System Structural Defect Repair Project

The 2011 Collection System Structural Defect Repair Project was developed to address structural defects observed in the Whites Creek Wastewater Treatment Plant service area. For this project, approximately 24 point repairs will be made and 7,500 feet of 8 to 18-inch diameter sewer will undergo cured-in-place pipe lining. This project is anticipated to be advertised for bids for construction during the upcoming quarter.

Section 5

Quarterly SSO and Dry Weather CSO Report

During the 3rd quarter of 2012, Metro experienced 69 SSOs, as listed in **Table 5-1**.

No dry-weather CSOs occurred during the reporting period.

Table 5-1 Quarterly SSO Report

Quarterly SSO Report									
July 1, 2012 through September 30, 2012									
Event Start Date	Event End Date	Rainfall	Duration (hours)	Overflow Volume (MG)	Overflow Cause	Location Manhole ID	Location	Unpermitted Discharge	Building Backup
02-Jul-12	02-Jul-12	0.00	7.50	0.0001	Line Break	11006014	1689 Stewarts Ferry Pk.	No	No
08-Jul-12	08-Jul-12	4.16	0.92	0.16	Power Related	03411009	Dry Creek SPS	Yes	No
14-Jul-12	14-Jul-12	3.18	0.25	0.00001	Rainfall	05201012CO	101 Coventry Woods Dr.	Yes	No
14-Jul-12	14-Jul-12	2.94	9.83	0.534	Rainfall	08410007	149 Barker Rd.	Yes	No
14-Jul-12	14-Jul-12	3.18	4.00	0.01	Rainfall	05207007	Berwick Trail SPS / Center Street	Yes	No
14-Jul-12	14-Jul-12	1.56	3.00	0.05	Rainfall	10203057	Cleeces Ferry SPS	Yes	No
14-Jul-12	14-Jul-12	2.94	7.50	0.2	Rainfall	08709040	Farmingham Woods SPS	Yes	No
14-Jul-12	14-Jul-12	3.18	1.33	0.151	Rainfall	05205001	Gibson Creek SPS	Yes	No
14-Jul-12	14-Jul-12	3.18	2.25	0.2	Rainfall	06208003	Hidden Acres SPS	Yes	No
14-Jul-12	14-Jul-12	3.37	1.25	0.01	Rainfall	WLS053A020	Langford Farms SPS	Yes	No
14-Jul-12	14-Jul-12	3.18	2.42	0.109	Rainfall	05116016	Loves Branch SPS	Yes	No
14-Jul-12	14-Jul-12	3.18	2.00	0.05	Rainfall	05213002	Madison Heights SPS	Yes	No
14-Jul-12	14-Jul-12	2.94	0.50	0.01	Rainfall	08514004	Munn Road SPS	Yes	No
14-Jul-12	14-Jul-12	3.03	5.50	0.26	Rainfall	04312004	Vandiver SPS	Yes	No
14-Jul-12	14-Jul-12	1.58	0.42	0.001	Rainfall	06213035	Williamson Ferry SPS	Yes	No
15-Jul-12	15-Jul-12	2.94	0.50	0.00001	Rainfall	08603181	4144 Andrew Jackson Pkwy.	No	No
19-Jul-12	19-Jul-12	2.95	1.00	0.001	Blockage	09016024	6416 Premier Dr.	No	No
19-Jul-12	21-Jul-12	4.31	12.17	5.055	Rainfall	09409003	Browns Creek SPS / Visco Dr.	Yes	No
19-Jul-12	20-Jul-12	6.00	2.50	0.191	Rainfall	03411009	Dry Creek SPS	Yes	No
19-Jul-12	20-Jul-12	3.71	12.42	1.311	Rainfall	04312004	Vandiver SPS	Yes	No
20-Jul-12	21-Jul-12	2.64	26.00	5.578	Rainfall	08410007	149 Barker Rd.	Yes	No
20-Jul-12	20-Jul-12	3.11	1.25	0.029	Rainfall	09104025	28th Avenue SPS / Centennial Blvd.	Yes	No
20-Jul-12	20-Jul-12	3.11	1.00	0.0001	Rainfall	06001013	3258 Brick Church Pk.	Yes	No
20-Jul-12	20-Jul-12	3.11	1.00	0.0001	Rainfall	05013010	3300 Briley Park Blvd.	Yes	No
20-Jul-12	20-Jul-12	3.11	1.00	0.0001	Rainfall	05010029	3438 Briley Park Blvd.	Yes	No
20-Jul-12	20-Jul-12	2.64	5.00	0.001	Rainfall	09510050	501 Bismark Dr.	Yes	No

Quarterly SSO Report

July 1, 2012 through September 30, 2012

Event Start Date	Event End Date	Rainfall	Duration (hours)	Overflow Volume (MG)	Overflow Cause	Location Manhole ID	Location	Unpermitted Discharge	Building Backup
20-Jul-12	20-Jul-12	2.95	5.67	0.58	Rainfall	09011002	516 Basswood Ave.	Yes	No
20-Jul-12	20-Jul-12	4.72	6.00	0.0001	Rainfall	08606106	5289 Old Hickory Blvd.	Yes	No
20-Jul-12	20-Jul-12	5.10	10.50	0.05	Rainfall	05207007	Berwick Trail SPS / Center St.	Yes	No
20-Jul-12	20-Jul-12	2.48	0.50	0.01	Rainfall	07404102	Bonnafair SPS	Yes	No
20-Jul-12	21-Jul-12	3.19	14.75	0.641	Rainfall	07114041	Cowan Street SPS	Yes	No
20-Jul-12	20-Jul-12	2.95	9.75	0.852	Rainfall	10210012	Davidson Branch SPS	Yes	No
20-Jul-12	20-Jul-12	2.48	13.00	0.5	Rainfall	08709040	Farmingham Woods SPS	Yes	No
20-Jul-12	20-Jul-12	6.00	6.83	1.216	Rainfall	05205001	Gibson Creek SPS	Yes	No
20-Jul-12	20-Jul-12	5.10	6.00	0.5	Rainfall	06208003	Hidden Acres SPS	Yes	No
20-Jul-12	20-Jul-12	2.00	1.00	0.01	Rainfall	16002032	South Oak Hill SPS	Yes	No
20-Jul-12	20-Jul-12	3.54	6.50	0.05	Rainfall	WLS053A020	Langford Farms SPS	Yes	No
20-Jul-12	20-Jul-12	3.20	8.75	0.1	Rainfall	01416001	Joelton SPS	Yes	No
20-Jul-12	21-Jul-12	6.00	10.50	0.783	Rainfall	05116016	Loves Branch SPS	Yes	No
20-Jul-12	20-Jul-12	5.10	6.50	0.2	Rainfall	05213002	Madison Heights SPS	Yes	No
20-Jul-12	20-Jul-12	5.10	9.00	0.5	Rainfall	05216026	Neely's Bend SPS	Yes	No
20-Jul-12	20-Jul-12	4.31	1.00	0.053	Rainfall	09403030	Shelby Park SPS	Yes	No
20-Jul-12	20-Jul-12	2.28	3.00	0.01	Rainfall	09015045	Sunliner SPS	Yes	No
20-Jul-12	20-Jul-12	2.95	2.25	0.122	Rainfall	09105090	West Park SPS	Yes	No
20-Jul-12	21-Jul-12	3.11	41.59	7.444	Rainfall	06915003	Whites Creek SPS	Yes	No
20-Jul-12	21-Jul-12	3.19	5.25	0.187	Rainfall	06213035	Williamson Ferry SPS	Yes	No
24-Jul-12	24-Jul-12	0.00	1.00	0.001	Blockage	08007008	3301 Hospital Ln.	Yes	No
24-Jul-12	24-Jul-12	0.00	8.50	0.001	Blockage	05008008	3474 Dickerson Pk.	Yes	No
28-Jul-12	28-Jul-12	0.00	0.25	0.00001	Blockage	14909006	728 Bowfield Ct.	Yes	No
29-Jul-12	29-Jul-12	0.00	0.25	0.00001	Blockage	94313003	102 Wychewood Cove	No	No
01-Aug-12	01-Aug-12	0.55	1.50	0.001	Blockage	03405019	554 Thomas Jefferson Cir.	Yes	No
09-Aug-12	09-Aug-12	0.28	2.00	0.001	Blockage	16213041	209 Cedar creek Dr.	Yes	No
09-Aug-12	09-Aug-12	0.71	1.00	0.0001	Blockage	10303051	5508 Bon Air Cir.	No	No

Quarterly SSO Report

July 1, 2012 through September 30, 2012

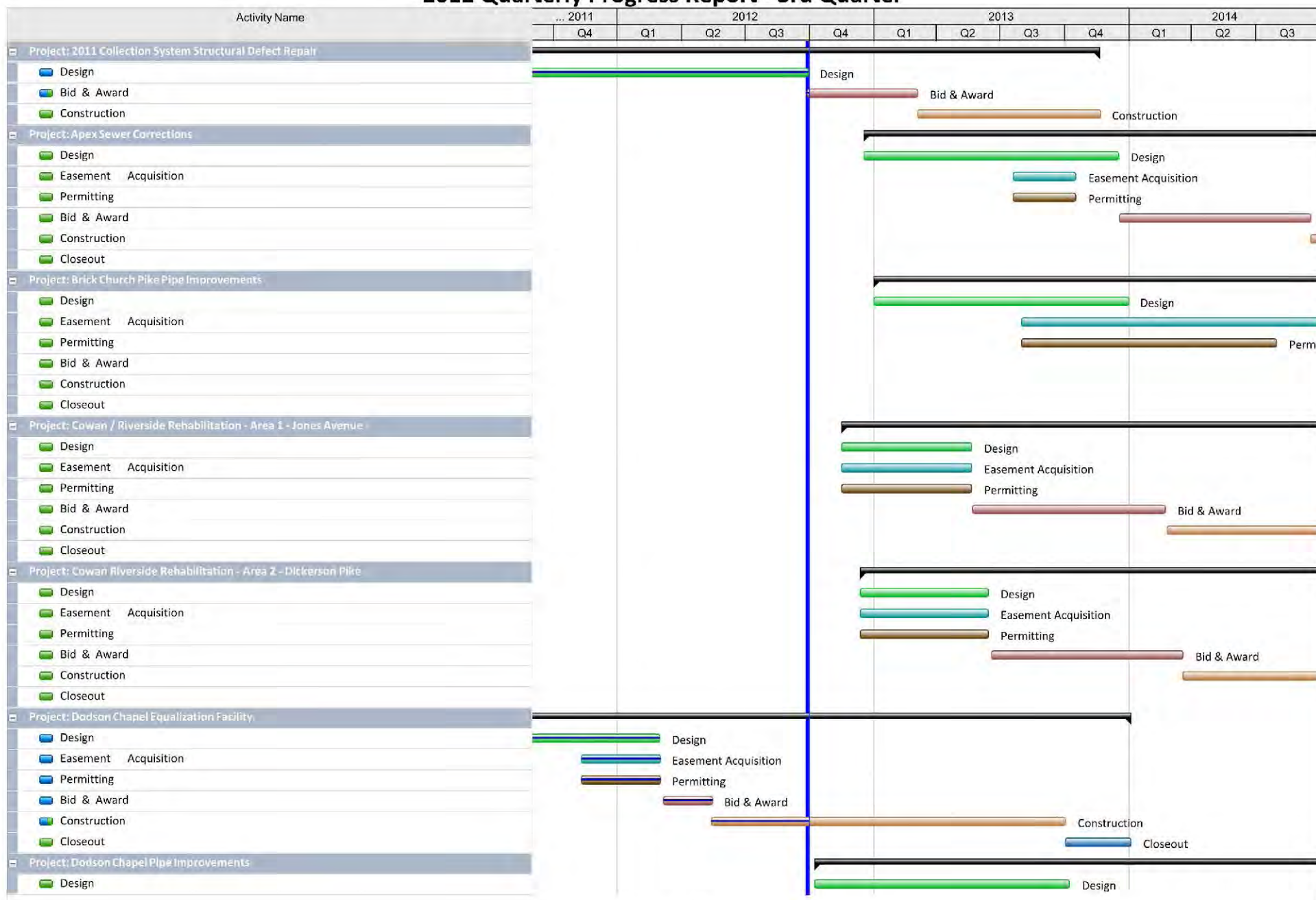
Event Start Date	Event End Date	Rainfall	Duration (hours)	Overflow Volume (MG)	Overflow Cause	Location Manhole ID	Location	Unpermitted Discharge	Building Backup
09-Aug-12	09-Aug-12	2.08	4.50	0.16	Rainfall	04312004	Vandiver SPS	Yes	No
13-Aug-12	13-Aug-12	0.47	3.50	0.001	Blockage	05008008	3480 Dickerson Pk.	Yes	No
16-Aug-12	16-Aug-12	0.80	1.25	0.00001	Blockage	05003011	1376 Bellshire Terrace Dr.	Yes	No
16-Aug-12	17-Aug-12	1.27	1.67	0.034	Rainfall	04312004	Vandiver SPS	Yes	No
21-Aug-12	21-Aug-12	0.00	1.00	0.0001	Blockage	15014028	4125 Tea Garden Way	No	No
21-Aug-12	21-Aug-12	0.00	1.00	0.0001	Blockage	09308019	601 Crutcher St.	Yes	No
28-Aug-12	28-Aug-12	0.00	0.75	0.00001	Blockage	09209063	3708 Charlotte Ave.	No	No
28-Aug-12	28-Aug-12	0.00	1.00	0.0001	Line Break	14812012	860 Richards Rd.	Yes	No
29-Aug-12	29-Aug-12	0.00	5.00	0.001	Blockage	13513018	460 Franklin Limestone Rd.	Yes	No
04-Sep-12	04-Sep-12	0.00	1.25	0.001	Blockage	09110102	800 Delray Dr.	Yes	No
14-Sep-12	14-Sep-12	0.00	2.00	0.001	Blockage	16108035	5414 Nolensville Pk.	Yes	No
20-Sep-12	20-Sep-12	0.00	2.50	0.001	Blockage	05008005	3510 Dickerson Pk.	Yes	No
24-Sep-12	24-Sep-12	0.00	0.50	0.00001	Blockage	14811028	4501 Packard Dr.	No	No
24-Sep-12	24-Sep-12	0.00	2.00	0.001	Mechanical	WMN030E002	Birchwood SPS	Yes	No
28-Sep-12	28-Sep-12	0.18	4.50	0.00001	Line Break	06205033	2424 Pennington Bend	No	No
29-Sep-12	29-Sep-12	0.00	1.45	0.001	Water Main Break	05213002	Madison Heights SPS	Yes	No

Appendix A

Schedule for Current and Upcoming Projects

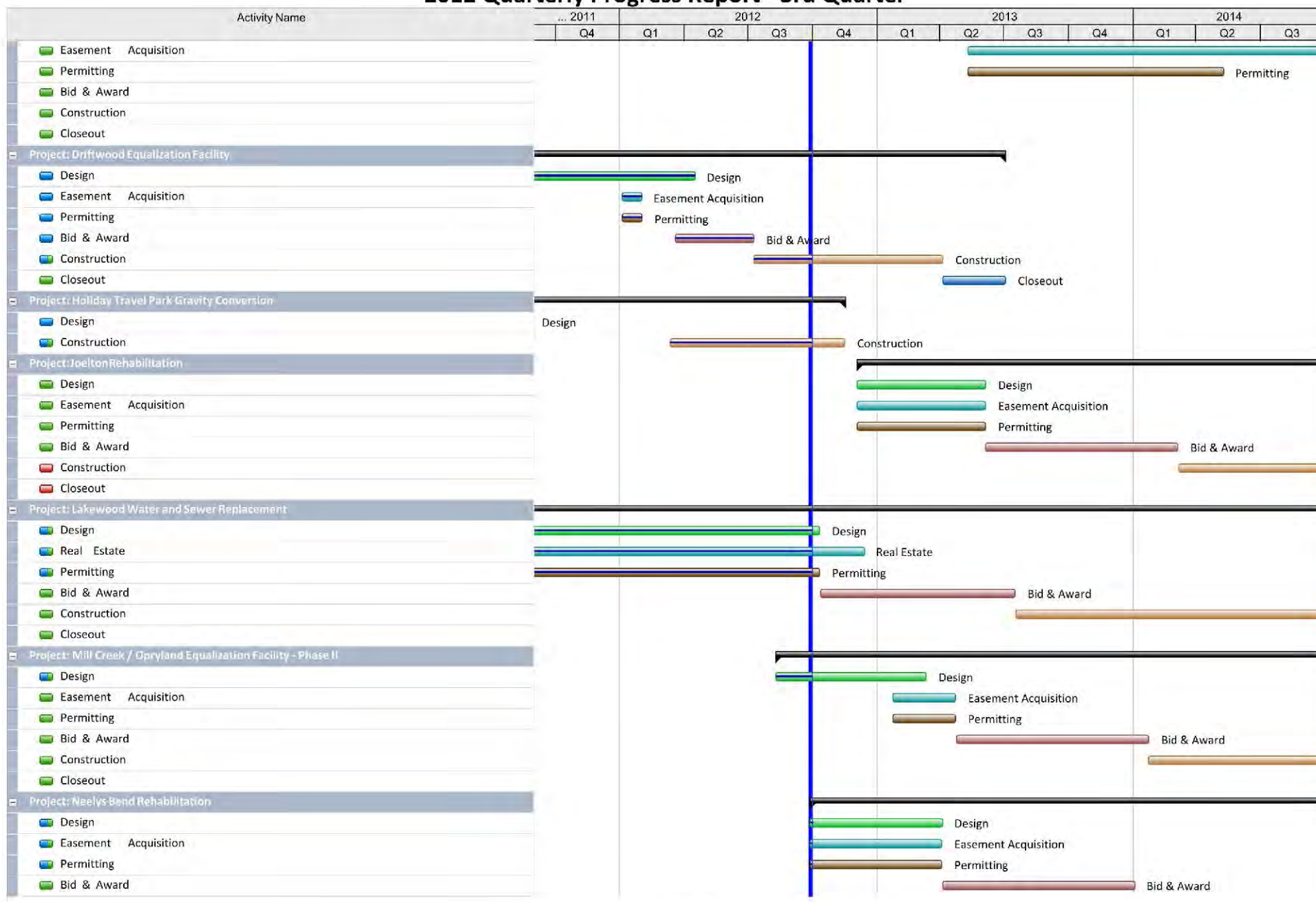
Nashville Overflow Abatement Program 2012 Quarterly Progress Report - 3rd Quarter

10/26/12



Nashville Overflow Abatement Program 2012 Quarterly Progress Report - 3rd Quarter

10/26/12



Nashville Overflow Abatement Program 2012 Quarterly Progress Report - 3rd Quarter

10/26/12

