

KARL F. DEAN
MAYOR



METROPOLITAN GOVERNMENT OF NASHVILLE AND DAVIDSON COUNTY

October 28, 2014

DEPARTMENT OF WATER AND SEWERAGE SERVICES
1600 SECOND AVENUE, NORTH
NASHVILLE, TENNESSEE 37208-2206

Chief, Environmental Enforcement Section
Environmental and Natural Resources Division
U. S. Department of Justice
Post Office Box 7611
Washington, D. C. 20044-7611

United States Attorney
Middle District of Tennessee
110 Ninth Avenue, South, Suite A961
Nashville, TN 37203

Chief, Water Programs Enforcement Branch
Water Management Division
U. S. Environmental Protection Agency, Region 4
Atlanta Federal Center
61 Forsyth Street, S.W.
Atlanta, GA 30303

Mr. Barry Turner, Deputy Attorney General
Office of the Tennessee Attorney General
Environmental Division
P. O. Box 20207
Nashville, TN 37202

Mr. Patrick Parker, Assistant General Counsel
Tennessee Department of Environment and Conservation
Division of Water Resources
William R. Snodgrass Tennessee Tower
312 Rosa L. Parks Avenue, 2nd Floor
Nashville, TN 37243

Re: DOJ Case No. 90-5-1-1-09000
Submittal of Quarterly Progress Report

Gentlemen and Madam:

In accordance with the provisions of the Consent Decree, Section XIX (Reporting Requirements), Subsection A, herewith we are transmitting the Quarterly Progress report which covers the time period from July 1, 2014 through September 30, 2014.



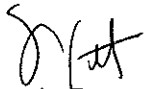
If you need assistance or accommodations, please contact Metro Water Services,
William E. Coleman, Jr., at (615) 862-4862, 1600 Second Avenue North, Nashville, TN 37208.

A copy of this report is concurrently being placed in the Public Document Repository (PDR).

I certify under penalty of law that this document and all attachments were prepared under my direction or supervision in accordance with a system designed to assure that qualified personnel properly gather and evaluate the information submitted. Based on my inquiry of the person or persons who manage the system, or those persons directly responsible for gathering such information, the information submitted is, to the best of my knowledge and belief, true, accurate, and complete. I am aware that there are significant penalties for submitting false information, including the possibility of fine and imprisonment for knowing violations.

If you have any questions concerning this report please contact me.

Sincerely,



Scott A. Potter, P.E.
Director



Ron C. Taylor, P.E.
Overflow Abatement Program Director
Engineering Division

Cc: Mr. David Tucker, Assistant Director, Operations
Mr. Cyrus Q. Toosi, P.E., Assistant Director / Chief Engineer, Engineering
Mr. Gregory A. Ballard, P.E., Engineer 3
Mr. Thomas G. Cross, Associate Director, Metropolitan Department of Law

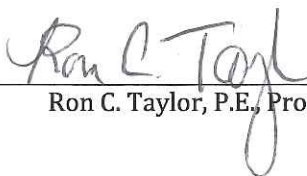
Clean Water Nashville Overflow Abatement Program

**Metropolitan Government of Nashville and Davidson County
Department of Water and Sewerage Services**

CONSENT DECREE QUARTERLY PROGRESS REPORT

July 1 through September 30, 2014

I certify under penalty of law that this document and all attachments were prepared under my direction or supervision in accordance with a system designed to assure that qualified personnel properly gather and evaluate the information submitted. Based on my inquiry of the person or persons who manage the system or those persons directly responsible for gathering such information, the information submitted is, to the best of my knowledge and belief, true, accurate and complete. I am aware that there are significant penalties for submitting false information, including the possibility of fine and imprisonment for knowing violations.



Ron C. Taylor, P.E., Program Director

10/27/14

Date

Table of Contents

Section 1	Introduction	1-1
1.1	Additional Programs	1-1
1.2	Report Organization	1-2
Section 2	Corrective Action Plan/Engineering Report.....	2-1
2.1	Completed CAP/ER Projects.....	2-1
2.2	CAP/ER Projects under Construction.....	2-2
2.3	CAP/ER Projects under Design.....	2-4
2.4	Upcoming CAP/ER Projects	2-5
Section 3	Long Term Control Plan.....	3-1
3.1	Completed LTCP Projects.....	3-1
3.2	LTCP Projects under Construction.....	3-2
3.3	LTCP Projects under Design	3-2
3.4	Upcoming LTCP Projects	3-2
Section 4	Additional Measures to Maintain Consent Decree Compliance	4-1
4.1	2013 Annual Sewer Rehabilitation.....	4-1
4.2	2014 Annual Rehabilitation – Area 1 - Whites Creek Trunk.....	4-1
Section 5	Quarterly SSO and Dry Weather CSO Report.....	5-1

List of Tables

Table 5-1	Quarterly SSO Report	5-2
-----------	----------------------------	-----

Appendix

Appendix A	Schedule for Current and Upcoming Projects
------------	--

Section 1

Introduction

On March 12, 2009, the Metropolitan Government of Nashville and Davidson County, Tennessee (Metro), entered into a Consent Decree with the United States and the State of Tennessee. To fulfill the reporting requirements defined in Section XIX.A. of the Consent Decree, Metro has prepared this *Quarterly Progress Report*, which includes the following information:

1. Information on sanitary sewer overflows (SSOs) and dry-weather combined sewer system overflows (CSOs) occurring during the reporting period
2. A description of the work conducted during the reporting period to comply with the requirements of the Consent Decree
3. The anticipated work for the upcoming quarter to comply with the requirements of the Consent Decree
4. Any additional information necessary to demonstrate that Metro is adequately implementing the work

Work, as defined in the Consent Decree, includes all activities that Metro is required to perform under the Consent Decree. For the purposes of this *Quarterly Progress Report*, however, the focus will remain on current and upcoming work related to the *Corrective Action Plan/Engineering Report (CAP/ER)*, the *Long Term Control Plan (LTCP)*, and additional activities to address SSOs and CSOs.

1.1 Additional Programs

Several additional programs, listed below, were also required to be developed or implemented as part of the Consent Decree. Any modifications or updates to these programs will be identified in Section 4 of this report.

- *Spill and Overflow Response Plan (Section VII.C.2)* – Metro continues to operate under the current *Spill and Overflow Response Plan (SORP)*. A review of the SORP will be conducted annually with any proposed changes submitted for U.S. Environmental Protection Agency (EPA) review and approval by June 1 each year.
- *Inter-jurisdictional Agreement Program (Section VII.C.3)* – All required inter-jurisdictional agreements are now in place, and Metro will continue to operate under these agreements, including monitoring peak flows received.
- *Capacity Assurance Plan (Section VII.C.4)* – The *Capacity Assurance Plan* will continue to be applied as a tracking/approval tool for new development/flow in the sanitary sewer system (SSS).
- *Pump Station Operation Plan for Power Outages (Section VII.C.5)* – All projects identified in the *Pump Station Operation Plan for Power Outages* were completed prior to the start of the reporting period.

- *Nine Minimum Controls Compliance Plan* (Section VII.D.1) – All elements of the *Nine Minimum Controls Compliance Plan* (NMC) were completed in 2012.
- Supplemental Environmental Projects (Section VIII) – The Supplemental Environmental Projects (SEPs) required in the Consent Decree were completed in 2010.

1.2 Report Organization

This *Quarterly Progress Report* is organized as follows:

Section 1 – Introduction

Section 2 – *Corrective Action Plan/Engineering Report*

Section 3 – *Long Term Control Plan*

Section 4 – Additional Measures to Maintain Consent Decree Compliance

Section 5 – Quarterly SSO and Dry-Weather CSO Report

Section 2

Corrective Action Plan/Engineering Report

To address the conditions causing overflows in their sanitary sewer system, Metro developed a *Corrective Action Plan/Engineering Report (CAP/ER)* that was submitted to EPA and the Tennessee Department of Environment and Conservation (TDEC) on September 11, 2011.

The CAP/ER development began with a characterization of Metro's sanitary sewer system through extensive monitoring and modeling to understand the existing system's limitations. The need for improvements to address both current and future sewer capacity needs was then assessed, and potential alternatives were evaluated to select efficient and cost effective solutions. These recommended projects, which include infrastructure rehabilitation, additional conveyance capacity, and storage of wet weather flows, are presented in the CAP/ER.

While EPA and TDEC review the report, Metro continues to move forward with the implementation of multiple projects presented in the CAP/ER. These projects are described in the following subsections, and a schedule illustrating current and upcoming work on CAP/ER projects is presented as Appendix A.

2.1 Completed CAP/ER Projects

The following projects, discussed in the CAP/ER, achieved substantial completion prior to the start of the reporting period:

- Dry Creek Wastewater Treatment Plant Optimization
- Smith Springs Equalization Storage
- Barker Road / Omohundro Equalization Storage Phase I
- West Park Equalization Storage Phase I
- Mill Creek 36-inch Trunk Sewer System Rehabilitation
- Rockwood Conveyance Improvements
- Holiday Travel Park Gravity Conversion
- Whites Creek Wastewater Treatment Plant (WWTP) Optimization and Disinfection Project
- Whites Creek Wastewater Pumping Station
- Dodson Chapel Equalization Tank and Wastewater Pumping Station Expansion
- Joelton Rehabilitation

2.2 CAP/ER Projects under Construction

The following projects, discussed in the CAP/ER, were under construction during the reporting period:

- Neely's Bend Rehabilitation

Based on the condition assessment data collected in the area adjacent to the Neely's Bend Rehabilitation project (as presented in the CAP/ER), the area targeted for rehabilitation was extended to include all gravity sewers that drain directly to the Neely's Bend Pump Station. Approximately 31,400 linear feet of gravity sewer and associated manholes were evaluated during design. The scope for construction consists of cured-in-place pipe lining of approximately 22,000 linear feet of sewer, rehabilitation of more than 110 manholes, and approximately 250 service renewals using cured-in-place pipe lining and open-cut techniques.

Design began on September 27, 2012, and was completed in June 2013. Advertisement for construction began on July 1, 2013, with bids due on August 2, 2013. However, following a protest regarding the bid, the project was re-advertised for bids, and new bids were received on October 14, 2013. Construction activities commenced on December 16, 2013, and are anticipated to be substantially complete during the upcoming quarter.

- Shelby Park Rehabilitation – Area 1 - Virginia Avenue

This rehabilitation project is the first of multiple projects that will be conducted in the Shelby Park Rehabilitation project area. The area evaluated for rehabilitation included approximately 54,400 linear feet of gravity sewer. The resulting construction project consists of cured-in-place pipe lining of over 50,000 linear feet of gravity sewer, rehabilitation of associated manholes, and over 700 service renewals using cured-in-place pipe lining or open-cut techniques.

Design began on September 11, 2012, and was completed in June 2013. Advertisement for construction began on August 14, 2013, and the contract was awarded in September 2013. Construction activities began on January 13, 2014, and are expected to continue during the upcoming quarter.

- Lakewood Water and Sewer Replacement

The design of sewer, water, and stormwater improvements in the Lakewood area is complete. Advertisement for a two-step procurement process began during the 2nd Quarter of 2013. Bids for construction from the three pre-qualified contractors were received on October 4, 2013, and the Notice of Award was issued on October 17, 2013. Construction activities began on January 27, 2014, and are anticipated to continue during the upcoming quarter.

This project represents the first of two phases of work in the Lakewood area.

- Mill Creek / Opryland Equalization Facility - Phase II

Phase II of the Mill Creek / Opryland Equalization Facility project includes the construction of approximately 19 million gallons of additional storage. Design began on August 10, 2012, and was complete, including obtaining the required permits and approvals, in July 2013. Advertisement for construction began on August 14, 2013, and the contract was awarded in

September 2013. Construction activities began on January 8, 2014, and are expected to continue during the upcoming quarter.

- Cowan / Riverside Rehabilitation - Area 1 - Jones Avenue

This rehabilitation project is the first of multiple projects that will be conducted in the Cowan / Riverside Rehabilitation project area. The area evaluated for rehabilitation included approximately 50,200 linear feet of gravity sewer and 270 manholes. The resulting construction project consists of cured-in-place pipe lining of over 40,000 linear feet of gravity sewer, rehabilitation of associated manholes, and over 630 service renewals using cured-in-place pipe lining or open-cut techniques.

Design began on February 4, 2013, and was completed during September 2013. Advertisement for construction began on October 7, 2013, and bids were received on November 8, 2013. Construction began on January 29, 2014, and is anticipated to continue during the upcoming quarter.

- Shelby Park Rehabilitation - Area 2 - Norvel Avenue

This rehabilitation project is the second of multiple projects to be conducted in the Shelby Park Rehabilitation project area. The area evaluated for rehabilitation included approximately 57,000 linear feet of gravity sewer and 330 manholes. The resulting construction project consists of cured-in-place pipe lining of approximately 57,000 linear feet of gravity sewer, rehabilitation of associated manholes, and over 700 service renewals using cured-in-place pipe lining or open-cut techniques.

Design began on July 3, 2013, and was completed in January 2014. Advertisement for construction began on February 5, 2014, and the contract was awarded in March 2014. Construction began on May 12, 2014, and is expected to continue through the upcoming quarter.

- Cowan / Riverside Rehabilitation - Area 2 - Dickerson Pike

This rehabilitation project is the second of multiple projects that will be conducted in the Cowan / Riverside Rehabilitation project area. The area evaluated for rehabilitation included approximately 51,400 linear feet of gravity sewer and 290 manholes. The resulting construction project consists of cured-in-place pipe lining of approximately 42,000 linear feet of gravity sewer, rehabilitation of associated manholes, and over 400 service renewals using cured-in-place pipe lining or open-cut techniques.

Design began on July 3, 2013, and was completed in March 2014. Advertisement for construction began on March 14, 2014, and a contract was awarded in May 2014. Construction activities began on July 7, 2014, and are anticipated to continue through the upcoming quarter.

- Highway 100 / Tyne Boulevard - Trimble Rehabilitation

The Highway 100 / Tyne Boulevard Pipe Improvements project, as presented in the CAP/ER, consisted of approximately 18,500 linear feet of conveyance improvements to alleviate overflows and surcharging in the existing gravity sewer. A detailed review of the existing sewer route and flows in the area indicated that rehabilitation to reduce wet weather flows in this

area may be a viable option to address overflows. Because of this, the Highway 100 / Tyne Boulevard Pipe Improvements project has been delayed to allow time for the completion of the Highway 100 / Tyne Boulevard - Trimble Rehabilitation project. The area evaluated for rehabilitation included approximately 63,000 linear feet of gravity sewer and 300 manholes. The resulting construction project consists of cured-in-place pipe lining of approximately 32,000 linear feet of gravity sewer, rehabilitation of associated manholes, and approximately 170 service renewals using cured-in-place pipe lining or open-cut techniques.

Design began on September 17, 2013, and was completed in March 2014. Advertisement for construction began on April 23, 2014, and the contract was awarded in June 2014. Construction activities began on August 12, 2014, and are anticipated to continue through the upcoming quarter.

2.3 CAP/ER Projects under Design

The following projects, discussed in the CAP/ER, were under design during the reporting period:

- West Park Equalization Facility Phase II

In order to minimize impacts to the surrounding neighborhood, Phases II and III of the West Park Equalization Facility were combined into a single design and construction project. Design began in May 2012; however, during preliminary design it was determined that potential flood impacts to adjacent properties required an alternate site for the equalization tank. Following additional investigation, Metro selected the adjacent park site to accommodate the required storage volume. Design efforts for the equalization tank were restarted during the 1st Quarter of 2013 and are complete pending permitting. Advertisement for construction is anticipated to begin in the upcoming quarter.

When constructed, the additional improvements at the West Park Equalization Facility are expected to add 21 million gallons of storage and expanded pumping capacity.

- Dodson Chapel Pipe Improvements

Following the completion of the Rockwood Conveyance Improvements project and subsequent updates to the hydraulic model in this area, evaluation of the collection system in the Dodson Chapel Pipe Improvements area indicated that the extents of the proposed project could be reduced while still addressing overflows. The current project consists of increasing the conveyance capacity of approximately 3,400 linear feet of sewer. Design began on October 8, 2012. In mid-2013, an analysis of the 60 percent design and the associated Dodson Chapel Equalization Tank and Wastewater Pumping Station Expansion project indicated that an unacceptable level of surcharging is predicted upstream of the project area. To address this, the existing design was reviewed and modified to replace the proposed inverted siphon with an aerial crossing. Design activities were completed in June 2014. Permitting and easement acquisition activities are anticipated to be completed during the upcoming quarter. Advertisement for construction is anticipated to begin in the upcoming quarter.

- Brick Church Pike Pipe Improvements

The Brick Church Pike Pipe Improvements project, as presented in the CAP/ER, consisted of increasing the conveyance capacity of approximately 15,500 linear feet of gravity sewer.

Following the analysis of additional flow monitoring conducted in the spring of 2013, the project's scope was revised to include approximately 10,000 linear feet of pipe replacement to increase the sewer's conveyance capacity and approximately 3,800 linear feet of rehabilitation of the existing sewer. It is anticipated that the rehabilitation project will be advertised as a separate construction project, the Westchester Drive Rehabilitation project. Additional rehabilitation activities are anticipated to take place in the upstream portion of the project area, including the small diameter sewers, through a separate, future project, the Tuckahoe and Nesbitt Rehabilitation project.

Proposals for design of the Brick Church Pipe Improvements project were submitted on January 11, 2013, and design for this project began on July 25, 2013. Design activities for the Brick Church Pipe Improvements are anticipated to continue through the upcoming quarter. Design activities for the Westchester Drive Rehabilitation project are anticipated to be completed during the upcoming quarter.

- Shelby Park Rehabilitation - Area 3 - Greenland Avenue

This rehabilitation project is the third of multiple projects that will be conducted in the Shelby Park Rehabilitation project area. The area to be evaluated for rehabilitation includes approximately 49,000 linear feet of gravity sewer and 260 manholes. Design began on December 5, 2013, and was completed in May 2014. Advertisement for construction began on August 27, 2014, and the contract is anticipated to be awarded during the upcoming quarter.

- Davidson and Brook Hollow Sewer Improvements

The Davidson and Brook Hollow Sewer Improvements project, referred to as the 622 Davidson Rehabilitation in the CAP/ER, included the evaluation of approximately 53,800 linear feet of gravity sewer and 300 manholes for rehabilitation. Additional condition assessment data, including flow monitoring and smoke testing data, has also been collected and analyzed. That analysis indicated that approximately 1,900 linear feet of sewer in this area requires upsizing in order to address the associated overflow. The project description was revised to include both the upsizing as well as repair of several adjacent pipe segments. Design began on April 24, 2014, and is anticipated to continue through the upcoming quarter.

2.4 Upcoming CAP/ER Projects

The following projects, discussed in the CAP/ER, are anticipated to begin procurement for design services during the upcoming quarter:

- 28th Avenue Rehabilitation – Area 1

The 28th Avenue Rehabilitation - Area 1 project is the first of multiple projects that will be conducted in the 28th Avenue Rehabilitation project area. The area to be evaluated for rehabilitation includes approximately 44,000 linear feet of gravity sewer and associated manholes. A preliminary review of the condition assessment data collected in the project area indicated several locations that require dye testing and closed-circuit television (CCTV) inspection. Procurement of design services is anticipated to begin in the upcoming quarter.

- Davidson Branch Pump Station and Equalization Facility

The Davidson Branch Pump Station and Equalization Facility project, referred to as the Davidson Branch Equalization Storage project in the CAP/ER, includes the relocation of an existing duty station and construction of a wastewater storage tank and wet weather pumping station on a property adjacent to the existing Davidson Branch Pump Station. Property acquisition, which has been ongoing for the previous 30 months, has continued throughout the reporting period. Closing on the property is scheduled for early October 2014. Procurement of design services was initiated during the reporting period. Design is anticipated to begin in the upcoming quarter.

- Shelby Park Rehabilitation - Area 4 - Brush Hill Road

This rehabilitation project is the fourth of multiple projects that will be conducted in the Shelby Park Rehabilitation project area. The area to be evaluated for rehabilitation includes approximately 47,400 linear feet of gravity sewer and 260 manholes. Procurement of design services was initiated during the reporting period, and design activities are anticipated to begin in the upcoming quarter.

- Cowan / Riverside Rehabilitation - Area 3 - West Trinity Lane

This rehabilitation project is the third of multiple projects that will be conducted in the Cowan / Riverside Rehabilitation project area. The area to be evaluated for rehabilitation includes approximately 48,100 linear feet of gravity sewer and 260 manholes. Procurement of design services was initiated during the reporting period, and design is anticipated to begin in the upcoming quarter.

- Smith Springs Rehabilitation – Area 1 - Priest Lake Meadows

The Smith Springs Rehabilitation – Area 1 - Priest Lake Meadows project is the first of multiple rehabilitation projects that will be conducted upstream of the Smith Springs Pump Station. The area to be evaluated for rehabilitation includes approximately 63,800 linear feet of gravity sewer and associated manholes. Procurement of design services is anticipated to begin in the upcoming quarter.

In addition to the projects listed above, Metro continues to conduct planning activities for multiple projects including acquiring necessary land to site facilities and collecting sewer condition assessment data.

Section 3

Long Term Control Plan

To reduce the occurrence and impact of combined sewer overflows into the Cumberland River, Metro developed an update to the *Long Term Control Plan* (LTCP), that was submitted to EPA and TDEC on September 11, 2011.

The LTCP followed EPA's *Combined Sewer Overflow Control Policy* in implementing a rigorous process for identifying and evaluating alternatives to reduce combined sewer overflows. Consideration included financial and engineering analyses to develop recommended improvements in conjunction with four key objectives that were established early in the planning process:

- Improve the water quality of the Cumberland River by reducing impacts from combined sewer overflows
- Provide a level of CSO control that results in improvements in water quality that are consistent with the community's use of the Cumberland River
- Align investment in CSO controls to be commensurate with the contribution of CSOs to water quality relative to other sources
- Consider the impact of the overall program cost on the ratepayers in the current economic climate

These goals and objectives were developed based on feedback provided by representatives from MWS, local government, and the community through a public engagement campaign developed to solicit input from affected stakeholders.

Metro continues to work with EPA and TDEC to address preliminary feedback on the LTCP. Metro has provided additional information pertaining to the proposed LTCP's compliance with Tennessee's water quality criteria, including a memorandum summarizing improvements to the hydraulic model representing the Washington combined sewer system and additional data that assessed the impact of CSO discharges on water quality in the Cumberland River. Discussions have been on-going throughout the reporting period and are expected to continue through the upcoming quarter.

As review of the LTCP continues, Metro continues to move forward with the implementation of two projects; however, Metro does not intend to move forward with other projects presented in the LTCP until approval is obtained. Active projects are described in the following subsections, and a schedule illustrating current and upcoming work on LTCP projects is presented as Appendix A.

3.1 Completed LTCP Projects

The following projects, discussed in the LTCP, were completed prior to the start of the reporting period:

- Broadway Improvements
- Washington CSO Facility Improvements

- Van Buren Improvements
- Driftwood Equalization Basin Expansion

3.2 LTCP Projects under Construction

The following project, discussed in the LTCP, was under construction during the reporting period:

- Apex Sewer Corrections

The Apex Sewer Corrections project consists of the installation of approximately 700 linear feet of new gravity sewer and the rehabilitation of approximately 2,300 linear feet of existing gravity sewer in the Washington CSO basin.

Design began on March 25, 2013, and was completed in September 2013. Advertisement for construction began on October 31, 2013, and the contract was awarded in December 2013. Construction activities began on February 10, 2014, and were substantially complete on July 1, 2014.

3.3 LTCP Projects under Design

There are currently no LTCP projects under design.

3.4 Upcoming LTCP Projects

No additional LTCP projects are anticipated to begin design during the upcoming quarter.

Work is nearing completion on the *Central Wastewater Treatment Plant Optimization Study* which will determine the maximum capacity for secondary treatment that can be achieved without constructing additional aeration basins or clarifiers. In order to achieve the maximum capacity, certain enhancements to the facility will be required, such as replacing the aeration system, modifying the disinfection process, and addressing hydraulic deficiencies. A draft of the report has been under review by Metro during the current quarter. The draft report was posted to the Clean Water Nashville website during the previous quarter. Work is underway to convert the recommendations of the study into a scope of work that will be utilized for soliciting design services for the project. It is anticipated that the advertisement for design services will be published before the end of the 2014 calendar year.

Section 4

Additional Measures to Maintain Consent Decree Compliance

In addition to the CAP/ER and LTCP projects described in the previous sections, the measures described in the following subsections are related to Metro's on-going Consent Decree compliance.

4.1 2013 Annual Sewer Rehabilitation

Design of the 2013 Annual Sewer Rehabilitation project commenced on June 23, 2013, and was completed in June 2014. Advertisement for construction began on July 8, 2014, and the contract was awarded in September 2014. Construction activities are anticipated to begin during the upcoming quarter.

For this project, which extends throughout the Metro service area, approximately 150 pipe segments have been identified for repair or rehabilitation. These sewers are located in areas outside of CAP/ER rehabilitation areas and are classified as high-priority or medium-priority sewers for evaluation based upon their observed condition as well as their potential consequence of failure.

4.2 2014 Annual Rehabilitation – Area 1 - Whites Creek Trunk

The 2014 Annual Rehabilitation – Area 1 - Whites Creek Trunk project consists of the evaluation and rehabilitation of the trunk sewer that follows or is adjacent to Whites Creek. The area to be evaluated for rehabilitation includes approximately 55,800 linear feet of gravity sewer, ranging in diameter from 8 to 60 inches. These sewers are located outside of CAP/ER rehabilitation areas and are classified as high-priority sewers for evaluation due to observations of infiltration. Procurement of design services began during the reporting period. Design is anticipated to begin in the upcoming quarter.

Section 5

Quarterly SSO and Dry Weather CSO Report

During the 3rd Quarter of 2014, Metro experienced 23 SSOs, as listed in **Table 5-1**.

No dry-weather CSOs occurred during the reporting period.

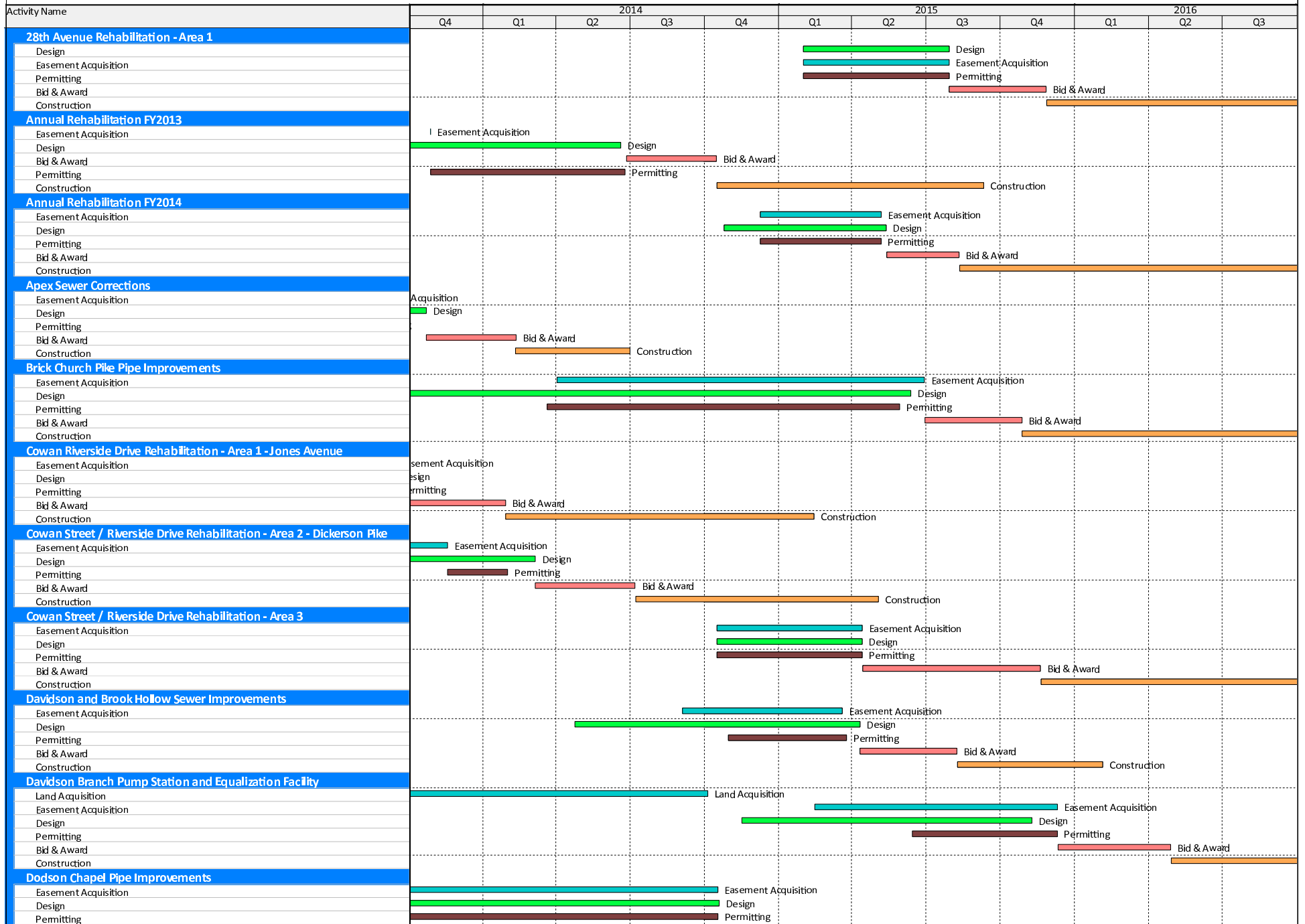
Table 5-1 Quarterly SSO Report

Quarterly SSO Report July 1 through September 30, 2014									
Event Start Date	Event End Date	Rainfall (inches)	Duration (hours)	Overflow Volume (MG)	Overflow Cause	Location Manhole ID	Location	Unpermitted Discharge	Building Backup
05-Jul-14	05-Jul-14	0.00	1.00	0.001	Blockage	05015064	3273 Vailview Dr.	Yes	No
07-Jul-14	07-Jul-14	0.00	1.00	0.0001	Blockage	09613009	2712 Wellman Dr.	No	No
10-Jul-14	10-Jul-14	0.00	0.50	0.0001	Blockage	10501150	1206B 15th Ave. S.	No	No
13-Jul-14	14-Jul-14	0.39	17.50	0.001	Line Break	09609050	2721 McKeige Dr.	Yes	No
16-Jul-14	16-Jul-14	0.00	3.00	0.00001	Blockage	WMN056N003	4536 Sawmill Pl.	No	No
16-Jul-14	17-Jul-14	0.00	25.00	0.0001	Force Main	11002007	2620 Lakeside Meadows Dr.	No	No
28-Jul-14	28-Jul-14	0.00	8.50	0.001	Line Break	08709048	6012 Elijah Ct.	No	No
09-Aug-14	09-Aug-14	2.52	0.50	0.019	Rainfall	05116016	Loves Branch SPS	Yes	No
13-Aug-14	13-Aug-14	0.00	1.00	0.00001	Blockage	08107083CO	1906 Cephas St.	No	No
26-Aug-14	26-Aug-14	0.00	2.00	0.001	Blockage	05004015	3556 Dickerson Pk.	Yes	No
28-Aug-14	28-Aug-14	0.00	0.50	0.00001	Blockage	14803039CO	3328 Ezell Rd.	No	No
28-Aug-14	28-Aug-14	2.29	0.50	0.001	Rainfall	05910048	748 Rowan Dr.	Yes	No
30-Aug-14	30-Aug-14	3.13	1.25	0.033	Rainfall	05116016	Loves Branch SPS	Yes	No
30-Aug-14	30-Aug-14	3.13	2.33	0.272	Rainfall	05205001	Gibson Creek SPS	Yes	No
30-Aug-14	31-Aug-14	2.80	3.58	0.095	Rainfall	10210012	Davidson Branch SPS	Yes	No
30-Aug-14	30-Aug-14	2.73	1.50	0.03	Rainfall	05213002	Madison Heights SPS	Yes	No
30-Aug-14	30-Aug-14	2.80	0.83	0.002	Rainfall	07114041	Cowan St. SPS	Yes	No
31-Aug-14	31-Aug-14	2.54	0.92	0.324	Controller	09409003	Browns Creek SPS / Visco Dr.	Yes	No
06-Sep-14	06-Sep-14	1.30	4.50	0.1	Rainfall	05213002	Madison Heights SPS	Yes	No
09-Sep-14	09-Sep-14	0.00	2.00	0.001	Blockage	12005054	416 McDonald Dr.	No	No
17-Sep-14	17-Sep-14	0.00	2.50	0.0001	Blockage	08401060	1217 Rosebank Ave.	No	No
19-Sep-14	19-Sep-14	0.00	1.50	0.001	Force Main	08104064	25 Vantage Way	Yes	No
27-Sep-14	27-Sep-14	0.00	3.50	0.0001	Force Main	03905002	4571 Dry Fork Rd.	No	No

Appendix A

Schedule for Current and Upcoming Projects

Nashville Overflow Abatement Program 2014 Quarterly Progress Report - 3rd Quarter



Nashville Overflow Abatement Program 2014 Quarterly Progress Report - 3rd Quarter

